



REIMAGINING FAIRMONT PARK

INTRODUCTION

REIMAGINING FAIRMONT PARK

Located in the Sugar House neighborhood of District 7 in Salt Lake City, UT, Fairmont Park is a 27-acre park that is well-loved by the surrounding community. Recently, Salt Lake City Department of Public Lands began efforts to enhance the park's northern entrance and improve safety and security throughout the park. These capital improvement projects include: the North End beautification of Sugarmont Drive, park-wide safety enhancements, a basketball court upgrade, and public art installations.

Over the course of 2025, the design team, CIVITAS, and Salt Lake City Department of Public Lands conducted site analysis and inventory, held multiple stakeholder and community engagement meetings, and collaborated on the conceptual design.

This booklet presents an initial phase for Fairmont Park that directly responds to the approved capital improvement projects put forth by Salt Lake City and feedback from the community and stakeholders. The long-term vision, or Overall Concept Design, builds upon principles and improvements completed in Phase 1 and sets forth ambitious goals for sustainability and resiliency for Fairmont Park.

TABLE OF CONTENTS

ANALYSIS AND FEEDBACK	3
OVERALL CONCEPT DESIGN	8
PHASE 1 CONCEPT DESIGN	13
APPENDIX	14

REIMAGINING FAIRMONT PARK

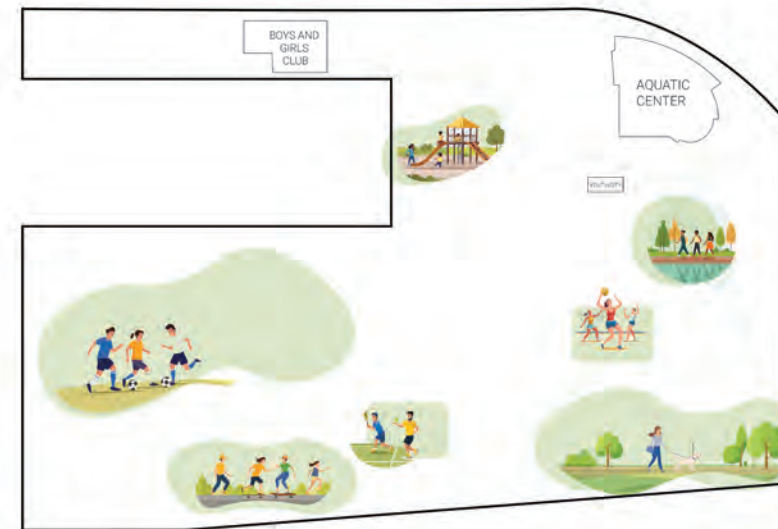
GUIDING PRINCIPLES

Guiding principles were developed after multiple stakeholder meetings and after the first community engagement event in conjunction with Salt Lake City Department of Public Lands staff.

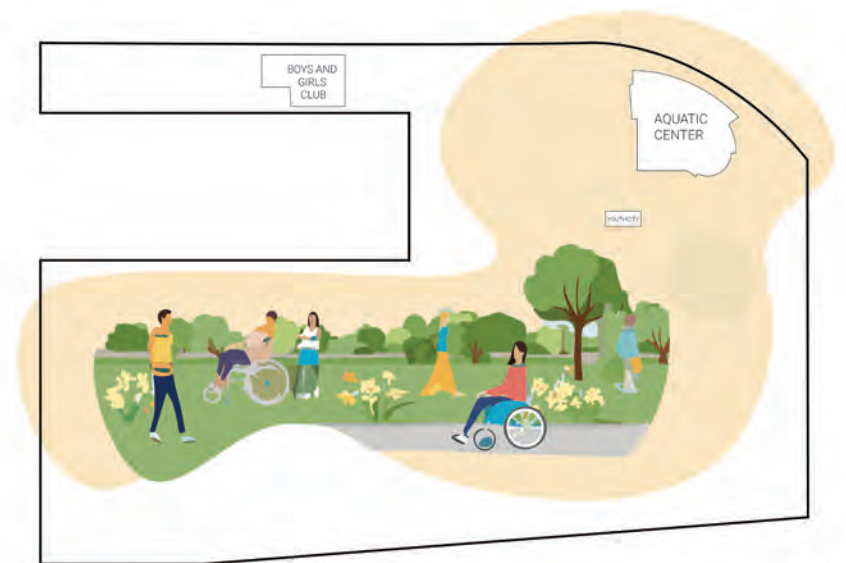
1 CREATE A SENSE OF ARRIVAL



2 PRESERVE WHAT IS LOVED BY THE COMMUNITY TODAY



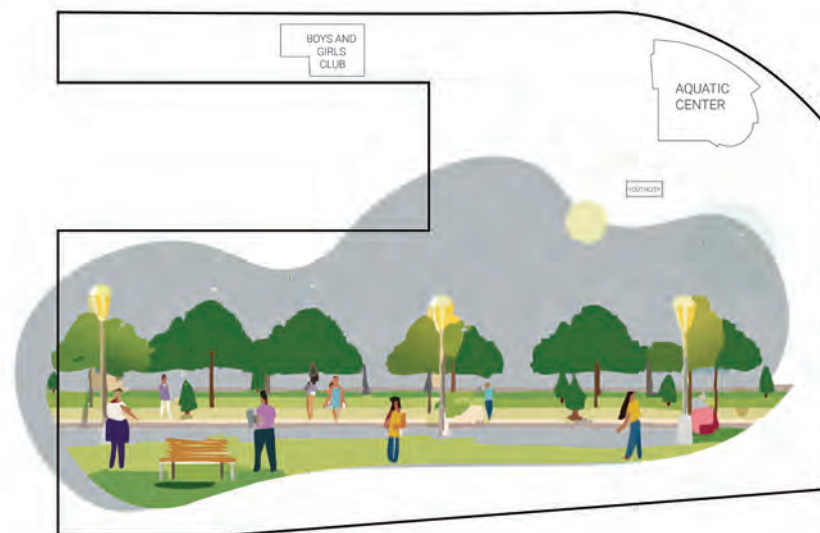
3 ENCOURAGE A SAFE, ACCESSIBLE, AND WELCOMING PARK



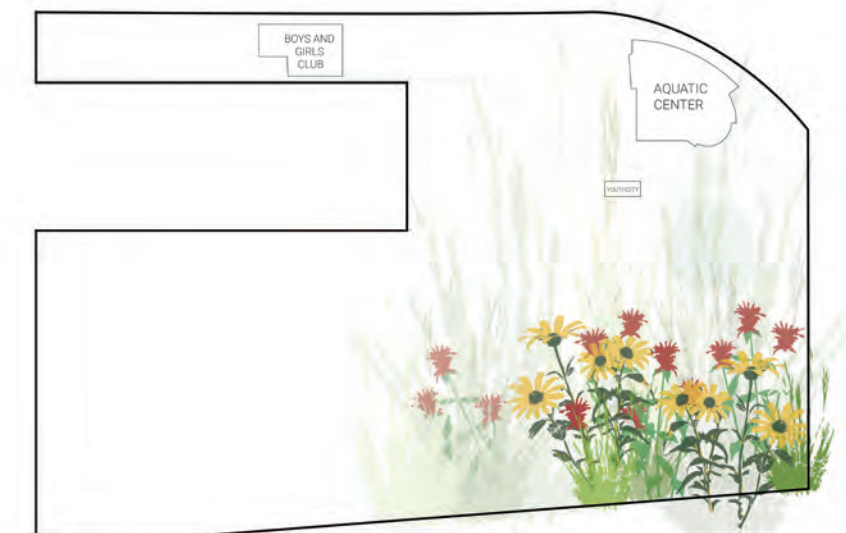
4 ENHANCE SPACES FOR COMMUNITY GATHERING, PLAY, AND RELAXATION



5 EXPAND PARK USERS TO BRING MORE EYES ON THE PARK



6 BUILD A RESILIENT, SUSTAINABLE PARK



REIMAGINING FAIRMONT PARK

SITE INFORMED DESIGN GOALS

An analysis of existing conditions as compared to the guiding principles informed conceptual design goals.

INVENTORY + ANALYSIS

Amenities and restroom/pavilion structures are dispersed throughout the park which can make them more challenging to maintain and surveil.

Paths do not reflect a clear hierarchy and are disjointed in some areas.

Embankments and fencing around the park's edges insulate it and may contribute to some visitors feeling unsafe.

15%
of the park's edges are
considered accessible

Large areas of the park are paved and some entrances prioritize vehicles over the pedestrian experience.

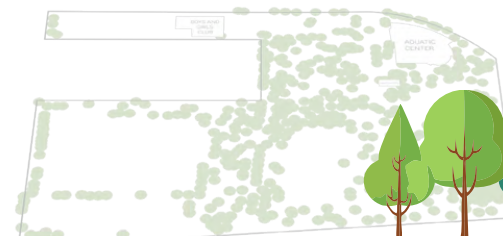
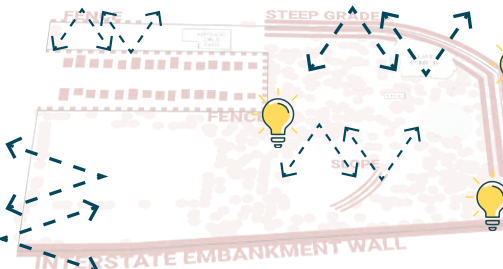
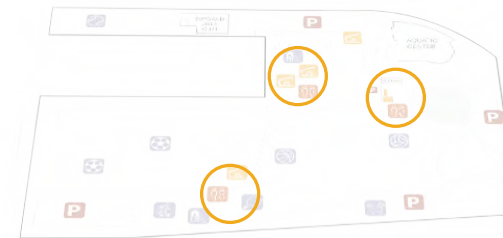
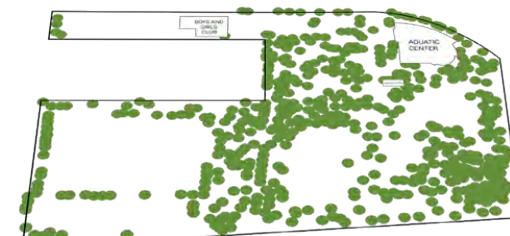
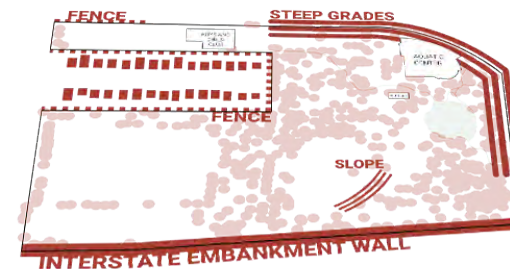
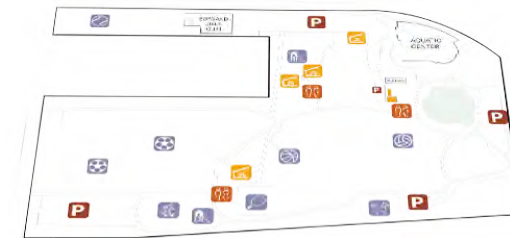
32%
of the park is paved
311
total parking spaces

The park's tree canopy is robust and diverse but can be a visual barrier near the playground and dog park.

559
trees in the park

An overwhelming majority of the park ground plane is lawn.

640,000+ SQ. FT.
mown lawn
80,000 SQ. FT.
native planting
380,000 GAL
of water used every time
lawns are watered



DESIGN GOALS

Evaluate the locations, conditions, and usage of pavilions and restrooms in order to enhance gathering spaces.

Use existing path networks to develop a circulation hierarchy and create stronger pedestrian connections throughout the park.

Improved visual sight lines, accessibility, and lighting along the edges and within the park.

Reduce paved areas or better integrate them into the park to prioritize the pedestrian experience over vehicles.

Design with trees in mind. Develop a strategy to protect, trim, or move trees as needed.

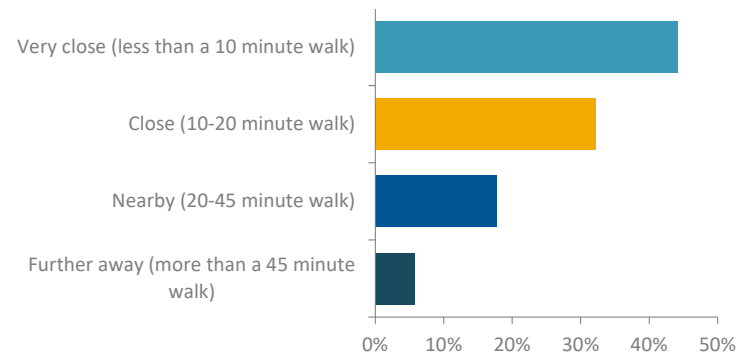
Introduce low-water native grass landscape and pollinator planting to areas of the park not used directly for active play or sports.

REIMAGINING FAIRMONT PARK

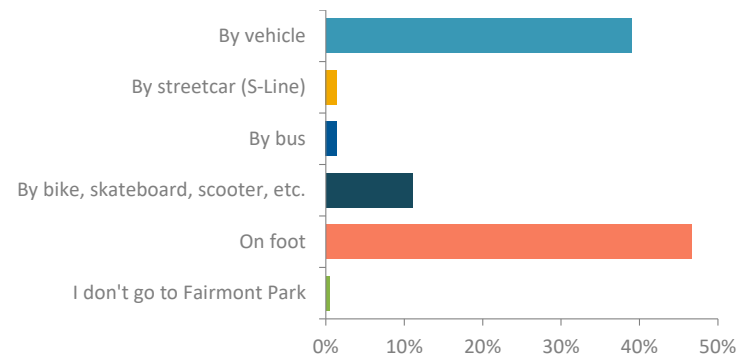
COMMUNITY MEETING #1 | PROGRAM AND PURPOSE

The initial community engagement event was held on March 6th, 2025 in order to understand what is beloved by the community and what improvements they wish to see.

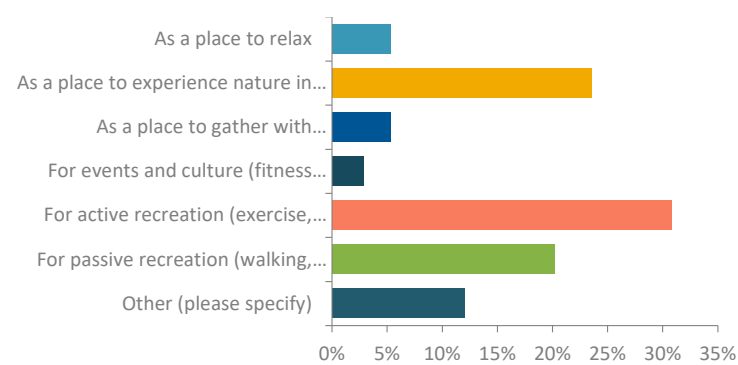
How close to Fairmont Park do you live?



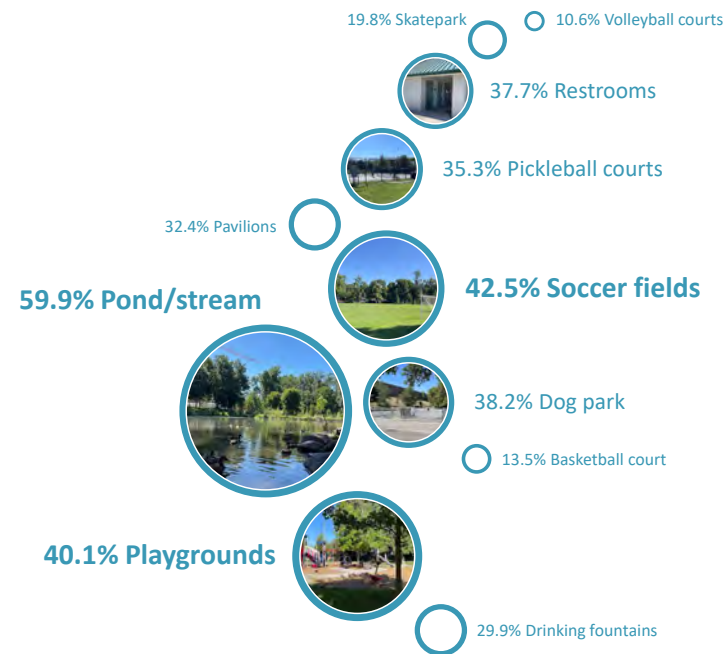
How do you most often arrive at Fairmont Park?



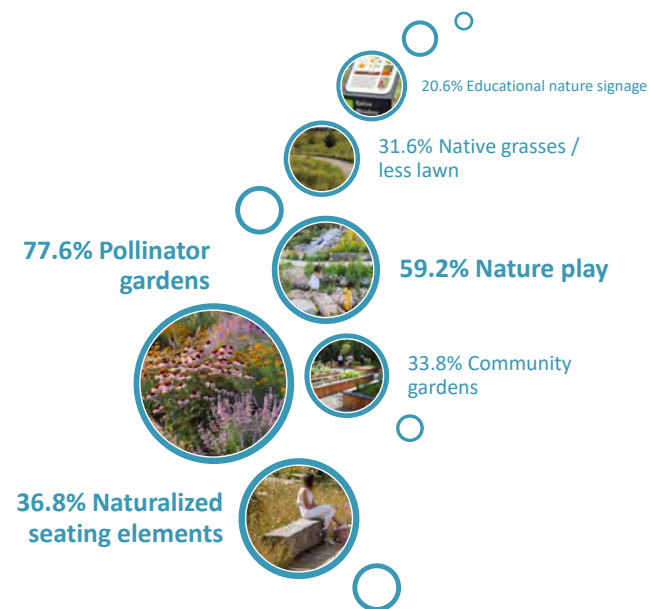
What would you like to see most at Fairmont Park?



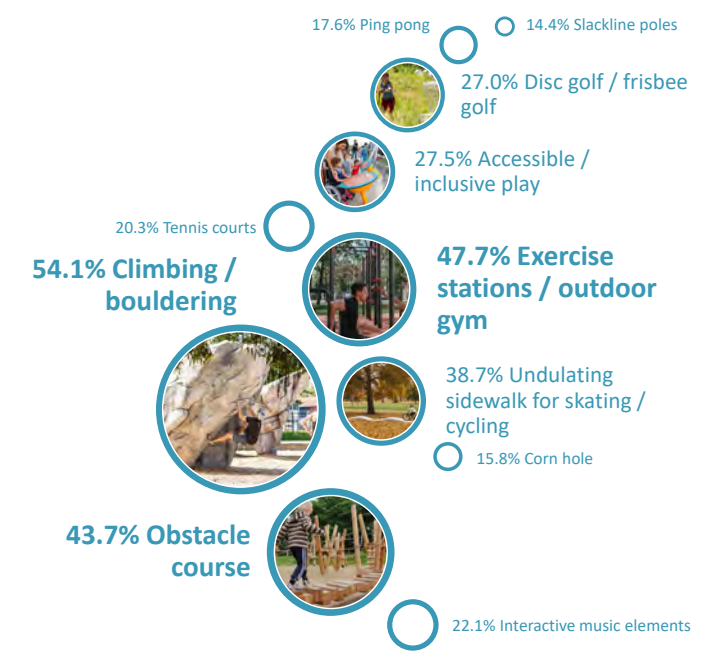
Which of the following amenities have you used in the past year?



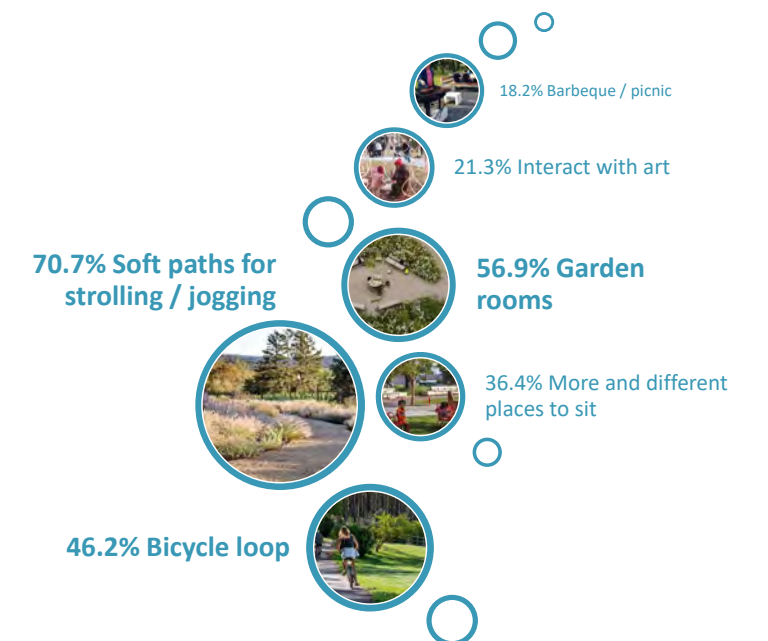
How do you want to experience nature at Fairmont Park?



How do you want to play at Fairmont Park?



How do you want to unwind at Fairmont Park?



REIMAGINING FAIRMONT PARK

COMMUNITY MEETING #2 | DESIGN ALTERNATIVES

Based upon the feedback from Community Meeting #1 and over 260 online surveys, the design team developed three unique design alternatives for the park. The plans represented a variety of park configurations, diverse programming, and varying levels of naturalization throughout the park.

Feedback from the community highlighted that a strong promenade experience along Sugarmont Dr. and a centralized restroom and pavilion area were preferred design interventions. Pollinator gardens and the addition of a beginner's skate park were also highly prioritized by the community.

CONCEPT 1: STITCH + MEND



The Stitch + Mend concept focuses resources on enhancing beloved park amenities and adding more spaces for recreation. The Beginners Bay skate park and garden walk were the favorite features of this concept.



CONCEPT 2: HEART OF THE PARK



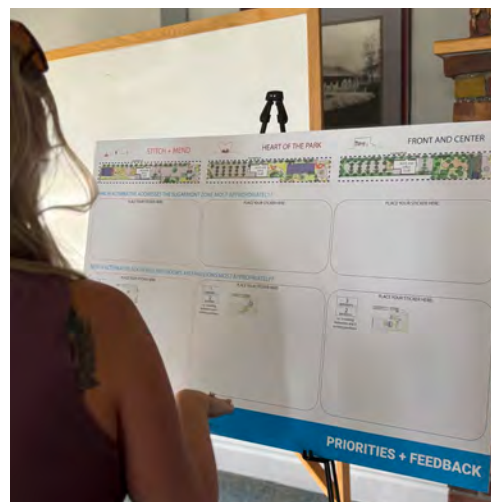
The Heart of the Park concept strives to activate the center of the park by introducing a tree-lined promenade, connecting the north McClelland Trail entrance to the southwest McClelland Trailhead Promenade. This was the most favored feature of this concept.



CONCEPT 3: FRONT AND CENTER



The Front and Center concept is the most bold in its approach to physical change and meeting sustainability goals to reduce lawn watering and maintenance. The Utah Wildflower Walk was the most desired design intervention from this concept.



MAIN TAKEAWAYS:

MAJOR PARK PRIORITIES:

- A promenade with double row of trees along Sugarmont Dr. is the most preferred streetscape pedestrian experience
- Consolidating restrooms with a pavilion and ranger station in a single location was regarded as the most appropriate approach to restrooms and safety in Fairmont Park.
- Maintaining a similar number of parking was a priority for those that participated in the online community engagement survey.

TOP PROGRAMMING REQUESTS:

- pollinator gardens
- beginner's skate park
- walking trails
- market/event plaza
- pump track
- playground improvements

REIMAGINING FAIRMONT PARK

Following the second community meeting and online survey with over 460 participants providing feedback, the design team consolidated the alternatives into a single preferred concept. As a result of the extensive feedback, it was determined that the preferred concept should create a long-term vision for the entire park. Once established, the vision would consider a phased approach to implementation with a proposed first phase that conforms to the current funding, provides the required amenities per the funding/CIP sources, and would provide a “complete” park experience if future funding does not become available.

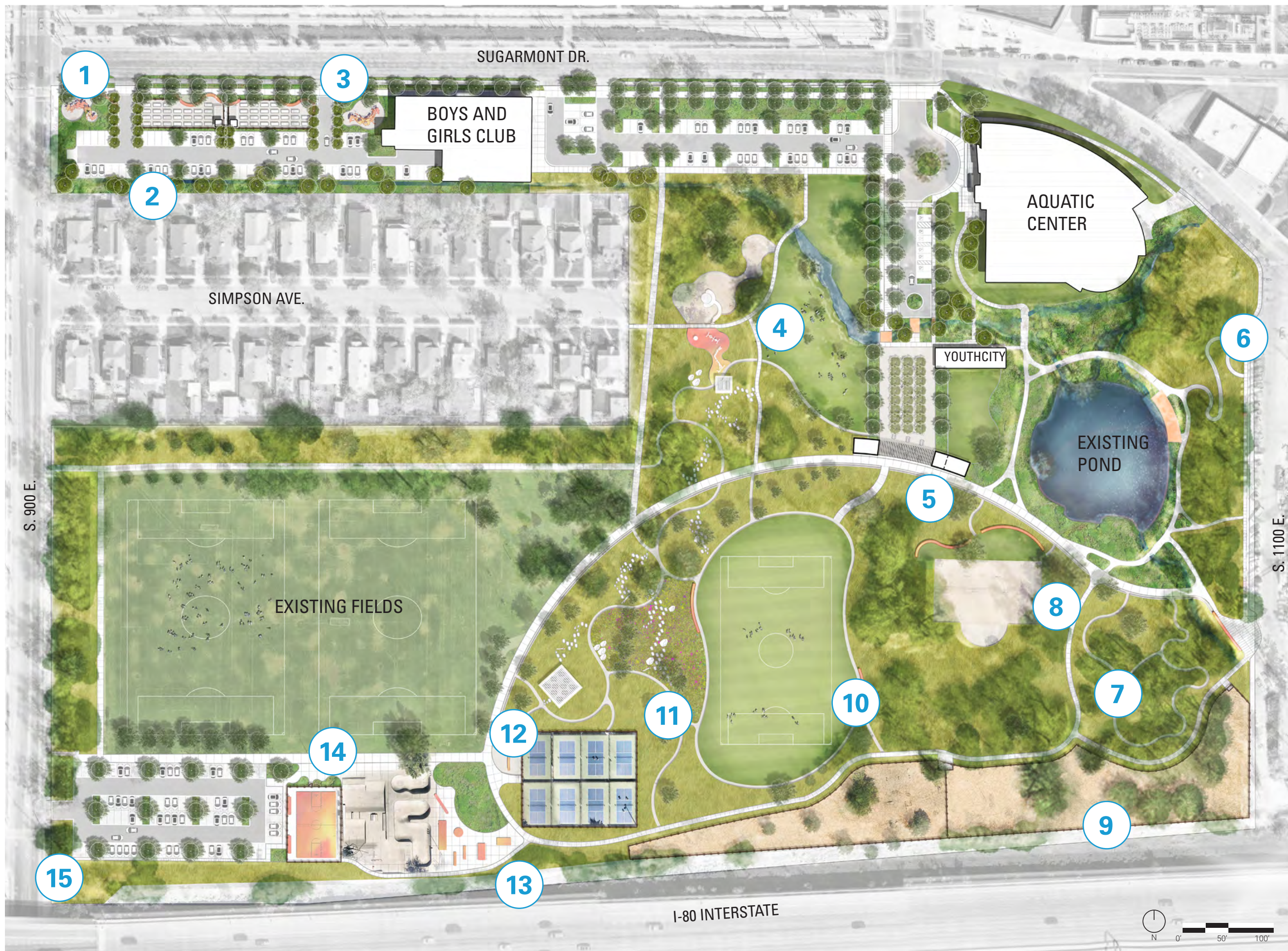
The refined vision creates and enhances a park-like setting along Sugarmont Dr., extends McClelland Trails south into the heart of the park, consolidates the restroom, ranger station, parks maintenance and large shade canopy into a community hub, expands recreational offerings, and introduces nature-based exploration play within the park. Throughout the engagement process the community showed great support for protecting the existing tree canopy and for integrating a naturalized Utah landscape into the design.

The overall vision for Fairmont Park aims to greatly reduce water-intensive turf areas to focus them in areas with existing sports fields and community gathering areas, while proposing extensive naturalization in underutilized areas of turf. In addition to the overall programmatic and naturalization enhancements, the proposed vision intentionally locates activating features in underutilized areas of the existing park and introduces a series of hard and soft surface trails to place the park in motion, pulling users to all areas of the park, and improve the overall sense of comfort and safety for park users.



REIMAGINING FAIRMONT PARK

OVERALL CONCEPT DESIGN



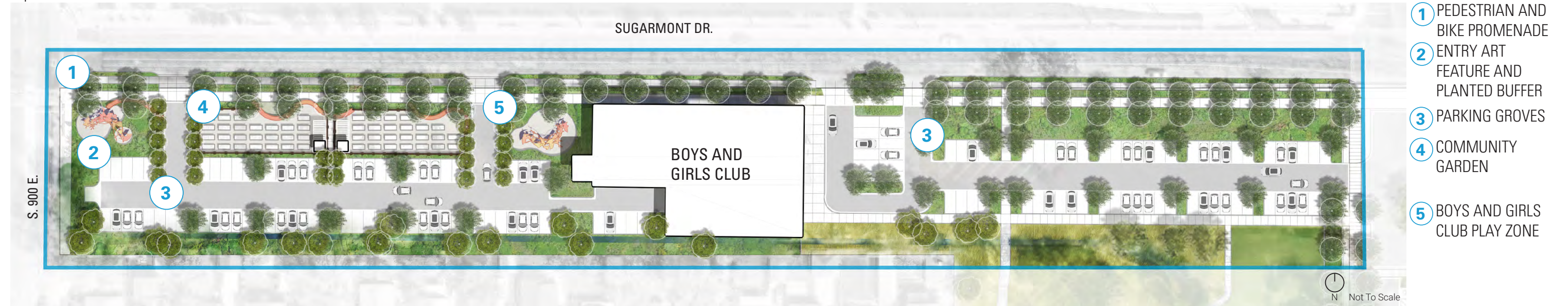
- 1** PARKING + COMMUNITY GARDENS
- 2** BOYS AND GIRLS CLUB PLAY ZONE
- 3** PARKING GROVE
- 4** THE PLAY PATCH EXTENSION
- 5** THE FAIRMONT HUB + RANGER STATION
- 6** SCOUTS' BOARDWALK + EASTERN FRONT PORCH
- 7** THE WOODED RAMBLE
- 8** ENHANCED VOLLEYBALL HANGOUT
- 9** EXTENDED ACTIVE DOG PARK
- 10** CENTRAL GATHERING LAWN
- 11** THE UTAH WILDFLOWER WALK + NATURE PLAY
- 12** PICKLEBALL EXPANSION
- 13** BEGINNERS BAY SKATE ZONE
- 14** THE COURT
- 15** SW PARKING GROVE

REIMAGINING FAIRMONT PARK

OVERALL CONCEPT DESIGN | SUGARMONT DRIVE IMPROVEMENTS

The Sugarmont Drive Improvements prioritize pedestrian and bicycle connections along the northern edge of Fairmont Park through a linear park experience. To improve safety, the enhancements include relocating and converting the on-street bikelane to a protected bikelane along the south edge of Sugarmont Dr., and introducing on-street parking. To enhance connectivity, the vision moves and expands the Boys and Girls Club play area to the southwestern side of the building and redistributes the Aquatic Center parking to the underutilized northwestern corner of Fairmont Park. These improvements allow for a continuous allee of trees and promenade for a safe pedestrian experience.

A key component of the project was the activation and enhancement to the long-forgotten tennis courts west of the Boys and Girls Club along Sugarmont. Throughout the engagement process, there was a stated desire for this area to be activated, but not noisy due to its location adjacent to the Simpson Avenue homes. By expanding/relocating parking and introducing community gardens to this area, the proposed vision will add a new use that was highly desired by the community and add new users, activation and more eyes in this area of the park that was previously forgotten.



- 1 PEDESTRIAN AND BIKE PROMENADE
- 2 ENTRY ART FEATURE AND PLANTED BUFFER
- 3 PARKING GROVES
- 4 COMMUNITY GARDEN
- 5 BOYS AND GIRLS CLUB PLAY ZONE



1 PEDESTRIAN AND BIKE PROMENADE



2 SUGARMONT ENTRY ART FEATURE AND PLANTED BUFFER



3 PARKING GROVES



4 COMMUNITY GARDEN



5 BOYS AND GIRLS CLUB PLAY ZONE



REIMAGINING FAIRMONT PARK

OVERALL CONCEPT DESIGN | MCCLELLAND TRAILHEAD

The improved pedestrian and arrival experience of The McClelland Trailhead pulls visitors into the heart of Fairmont Park. An allee of trees and pedestrian promenade bring you to a centralized park ranger station, bathroom facilities, and community pavilion. A flexible plaza area with a grove of trees invites a diversity of events from family reunions to festivals with food trucks, while still maintaining a pleasantly shaded area for day-to-day enjoyment. Centralizing these improvements near existing amenities and the ranger station allows for improved safety and monitoring of park facilities.

Beyond the new programming and placemaking, the proposed design maintains drop-off, emergency access, and accessible parking for the Aquatic Center and Youth City, two important partners and stakeholders that provide much needed activation to the park.



- ① PEDESTRIAN PROMENADE
- ② DROP OFF + PICK UP
- ③ CENTRAL GATHERING PLAZA
- ④ RANGER STATION + RESTROOMS WITH PERGOLA
- ⑤ EXISTING LAWN

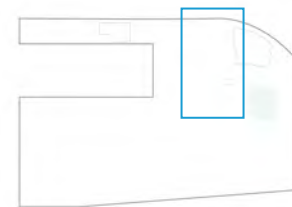
① PEDESTRIAN PROMENADE



③ CENTRAL GATHERING PLAZA



④ RANGER STATION + RESTROOMS WITH PERGOLA



REIMAGINING FAIRMONT PARK

OVERALL CONCEPT DESIGN | NATIVE LANDSCAPES

Fairmont Park will concentrate water-intensive turf areas to sports fields and gathering areas, allowing for a significant portion to be restored as a native drought-tolerant Central Basin grassland. The connected landscape becomes a celebrated feature, bringing Salt Lake City's local ecosystem to park visitors. The improvements include low-impact programming such as walking trails through native landscape, a pump track through existing trees with a restored

ground plane, and a nature-based exploration play area. Improvements also include expanding the dog park, providing a gathering area near the volleyball court, and improving accessibility into the park along S. 1100 E.



- 1 THE PLAY PATCH EXTENSION
- 2 UTAH WILDFLOWER WALK + NATURE PLAY
- 3 CENTRAL GATHERING LAWN
- 4 RESURFACED DOG PARK
- 5 VOLLEYBALL COURT SEATING
- 6 NATIVE RAMBLE
- 7 SCOUTS' BOARDWALK + EASTERN FRONT PORCH

1 THE PLAY PATCH EXTENSION



2 UTAH WILDFLOWER WALK + NATURE PLAY



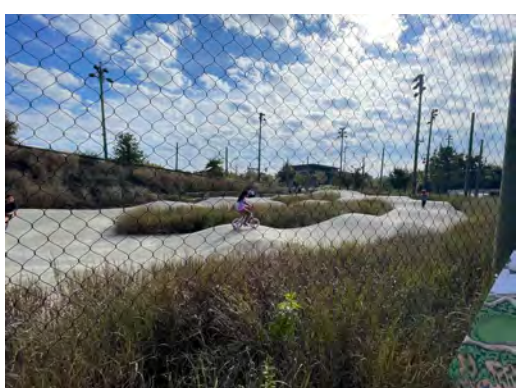
3 CENTRAL GATHERING LAWN



5 VOLLEYBALL COURT SEATING



6 NATIVE RAMBLE



7 SCOUTS' BOARDWALK + EASTERN FRONT PORCH



REIMAGINING FAIRMONT PARK

OVERALL CONCEPT DESIGN | ACTIVE RECREATION

Building upon existing recreational fields and courts, the western half of Fairmont Park will become the highly active recreational zone. A naturalized arrival experience along S. 900 E. invites visitors to explore an expanded skate park with beginner-level features, additional pickleball courts and improved pickleball plaza for gathering, a full-sized basketball court, and improved

parking layout to reduce the heat island effect. This highly programmed area will draw visitors throughout the day, improving overall user comfort, safety and visibility.



- 1 PICKLEBALL EXPANSION
- 2 BEGINNERS BAY SKATE ZONE
- 3 THE COURT
- 4 SW PARKING GROVE
- 5 NATIVE EDGE AT 900 E

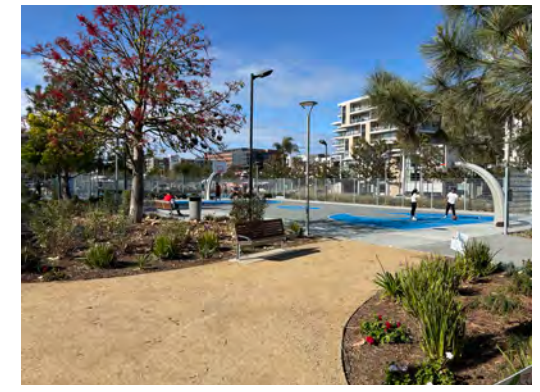
1 PICKLEBALL EXPANSION



2 BEGINNERS BAY SKATE ZONE



3 THE COURT



4 SW PARKING GROVE



5 NATIVE EDGE AT S. 900 E.



REIMAGINING FAIRMONT PARK

PROPOSED PHASE 1



- 1** SUGARMONT DRIVE PROMENADE
- 2** COMMUNITY GARDEN + PARKING GROVE
- 3** BOYS AND GIRLS CLUB PLAY ZONE
- 4** MCCLELLAND TRAILHEAD PROMENADE
- 5** CENTRAL GATHERING PLAZA
- 6** RANGER STATION + RESTROOMS WITH PERGOLA
- 7** EASTERN FRONT PORCH
- 8** THE UTAH WILDFLOWER WALK + NATURE PLAY
- 9** BEGINNERS BAY SKATE ZONE
- 10** THE COURT